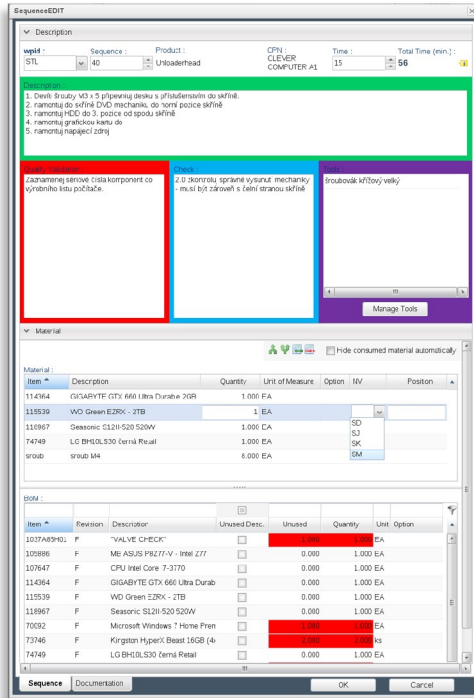


An Easy Management of Technological Procedures

Evidence of technological (assembly, working) procedures (OMS) is an application designated for editing and management of instruction cards that are placed at the workplaces. The procedures can be linked to the parts list, where the technologist picks up the individual components and matches them with the operations defined at the individual workplaces of the production line.



+ For the technologist

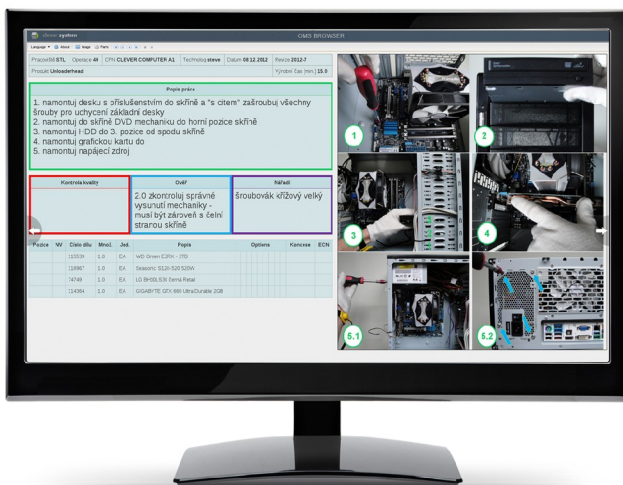
- Intuitive administration interface
- Colour distinguished windows according to the categories of operations
- Drag and drop part assigning from the parts list
- Automatic revision control and the available history of changes
- Built-in picture editor
- E-mail notification of changes in the parts list

+ For the IT specialist

- OMS Admin is a Web application – the user does not need to install anything, all that is required is an internet browser
- Easy backing up; all data is stored centrally in SQL server databases
- On-line support

Application Output

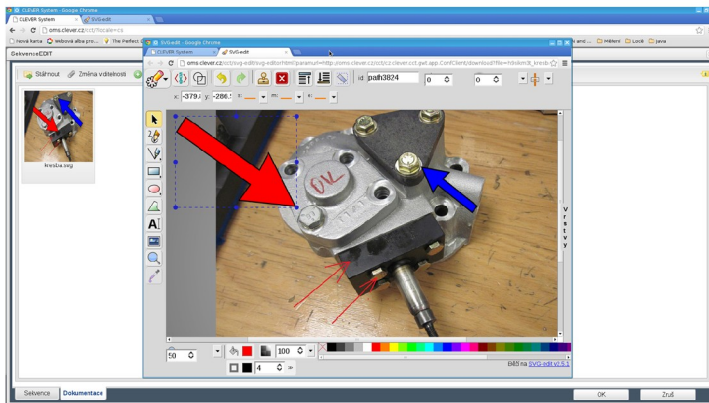
The output is a PDF document with operations and illustrative photographs which is designated to be printed out or it is possible to display the procedures directly on the workplace monitor.



Electronic version displayed on a monitor

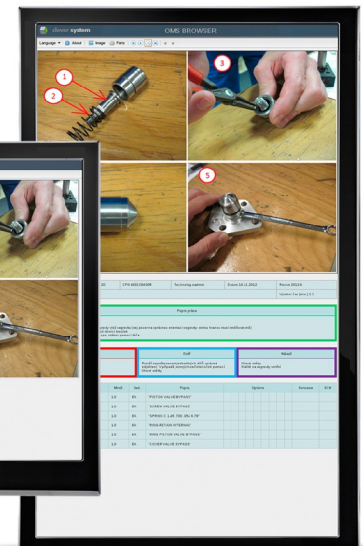
- ✓ No need to print out anything
- ✓ No need to distribute anything at the workplaces
- ✓ No need to discard anything
- ✓ There is always an update revision of the OMS immediately at the workplace
- ✓ Possibility of displaying the OMS for a specific product variant
- ✓ Displaying the OMS on any computer that has an internet browser installed

Operational Method Sheets	OMS Admin	OMS Admin BOM
Editing of the technological assembly procedures linked to the parts list		✓
Possibility of setting up different levels of component part assemblies	✓	✓
Editing of the technological assembly procedures without a link to the parts list	✓	✓
Verification whether all the components have been used from the parts list	✓	✓
Possibility of adding new or alternate component parts	✓	✓
Possibility of defining the relation: component part -> product variant	✓	✓
Revision - Automatic revision increase and closing this revision for editing, after the changes in the technological procedure have been completed	✓	✓
Export of the entire technological procedure, including pictures, into PDF	✓	✓
Possibility of displaying technological procedures in an internet browser	✓	✓
Setting up user/technologist rights to individual products	✓	✓
Change history (who and when changed what to what) and looking up the technological procedure according to expiration date	✓	✓
Checking whether there is not an unauthorized or wrongly assigned component part in some technological assembly procedure		✓
Parts list change notice. In case of a change in any technological assembly procedure the relevant users are notified according to the setting in "email manager"		✓
Email manager – assigns the list of e-mail addresses to which information about a change in the parts list of a specific product is sent		✓
Notification of the changes to the parts list that have not yet been included on starting the application		✓
Multilinguality – English, Czech	✓	✓



OMS Admin

Easy picture editing by means of a built-in graphics editor



OMS Browser

An easy defining of the look by means of templates

